

## 口腔護理

### Oral Care

- 含糖量高的食品容易引致蛀牙，應盡量減少及避免吃此類食品。若要吃甜品，吃完後應用清水漱口。

Limit or avoid the intake of sugar which can lead to tooth decay. Whenever taking sweets, you should use clear water to rinse your teeth.

- 從小養成每天早晚刷牙的習慣，學習正確的刷牙方法，更有效預防蛀牙及牙周病。

Fostering a good habit of brushing your teeth morning and night, as well as learning the correct way of brushing are effective ways of preventing tooth decay and gum diseases.



- 選擇合適的牙刷、牙膏、牙線及漱口水。

Selecting a suitable tooth brush, tooth paste and floss and fluoride rinse.

- 從小開始定期往牙醫處檢查，可及早發現蛀牙、牙齒咬合不正或排列不齊等情況，定期洗牙可去除牙石及垢膜以防牙周病。

Regular dental check-up, starting from childhood, can detect tooth decay and malalignment of teeth at early stage. Regular scaling and polishing can remove the plaque from the teeth which can prevent gum disease.

**24小時急診服務：(852) 2608 3355**  
24 Hour Hotline

查詢及安排預約，請致電：

**2608 3393** (仁安醫院牙科中心) 或  
**2986 1166** (仁安醫院尖沙咀牙科中心)

For appointment and further enquiries, please call:

**2608 3393** (Union Hospital Dental Centre) or  
**2986 1166** Union Hospital Dental Centre (Tsim Sha Tsui)



## 仁安醫院牙科中心 Union Hospital Dental Centre

香港沙田大圍富健街18號  
18 Fu Kin Street, Tai Wai, Shatin, Hong Kong  
電話 Tel: 2608 3393 / 2608 3388  
電子郵件 Email: union@union.org  
網址 Website: www.union.org



Accredited by The Australian Council on Healthcare Standards since June 2010



ISO 9001:2015 FS66763

## 仁安醫院尖沙咀牙科中心

### Union Hospital Dental Centre (Tsim Sha Tsui)

九龍尖沙咀彌敦道132號美麗華廣場A座18樓1812室  
Unit 1812, 18/F, Mira Place Tower A, 132 Nathan Road,  
Tsim Sha Tsui, Kowloon  
電話 Tel: 2986 1166



只參與澳洲醫療服務標準委員會「醫院認證」計劃  
Accredited by ACHS only

本院保留一切更改或刪改此單張之權利，而不作另行通知。  
Union Hospital reserves the RIGHT to amend any information in this leaflet without prior notification.



只限本診所病人參考  
For Existing Patient Only

# 牙科服務 Dental Service



仁心、安心、貼您心

Caring · Reliable · Empathetic

# 牙科服務 Dental Service



仁安醫院之牙科中心，為門診及住院病人提供一個綜合普通科和專科牙科治療服務。

Union Hospital dental department provides an integrated dental service for our in-patients and out-patients by our general and specialist dental staff.

## 牙齒分科服務範圍

### Dental Subspecialty Service

#### 牙髓治療科 Endodontics

處理牙髓疾病，治療包括有杜牙根，重做杜牙根，切牙腳手術，處理裂牙和撞傷的牙齒。

Deals with the tooth pulp and the tissues surrounding the root of a tooth, procedures including root canal therapy, endodontic retreatment, surgery, treating cracked teeth, and treating dental trauma.



#### 牙周病科 Periodontics

預防，診斷，治療牙齒周邊的牙肉與組織。

Prevention, diagnosis, and treatment of diseases that affect the gums and supporting structures of the teeth.



#### 兒童齒科 Paedodontics

處理幼兒，兒童，青少年牙齒口腔護理及預防和治療疾病。

Dental health of children, from infants and toddlers through teenagers.



#### 修復齒科 Prosthodontics

修復自然的牙齒和 / 或更換缺牙，促進牙齒舒適，良好外觀和保健的作用。提供相鄰的頰面部組織使用人工替代品，它包括可拆卸部分或全部假牙，固定牙冠 / 牙橋，或種植體支撐牙齒的修復。

Diagnosis, treatment planning, rehabilitation and maintenance of the oral function, comfort, appearance and health of patients with clinical conditions associated with missing or deficient teeth and/or oral and maxillofacial tissues.

#### 牙齒矯正科 Orthodontics

診斷，預防，治療牙齒咬合，位置及顎骨生長問題。

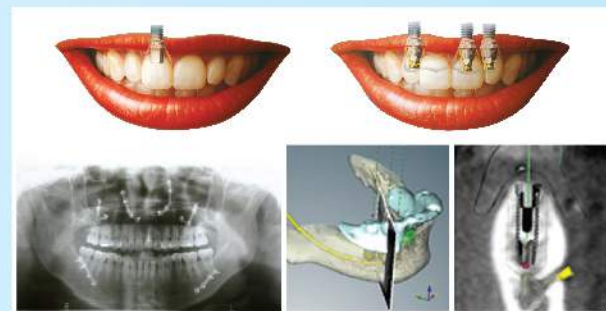
Diagnosis and treatment of dental deformities as well as irregularity in the relationship of the lower to the upper jaw.



#### 口腔頰面外科 Oral and Maxillofacial Surgery

口腔頰面手術，包括植牙，處理阻生智慧齒，口腔頰面結構異常，口腔顎骨腫瘤及創傷等。

Surgery to correct a wide spectrum of diseases, injuries and defects in the head, neck, face, jaws and the hard and soft tissues of the oral and maxillofacial region, dealing with trauma, wisdom teeth surgeries, implant surgeries.



### 提供整形外科手術：

#### Providing Reconstructive Surgery for:

- 口腔、頰面部毀容  
Facial disfigurement
- 先天性唇裂、顎裂  
Cleft lip and palate
- 口腔頰面、顛頰關節（牙骹）畸形  
Deformities of the face and jaws
- 面骨骨折（頰關、觀骨、鼻骨、眼眶骨）  
Facial fractures
- 口腔頰面部人工補缺復康，如義耳及牙齒種植  
Artificial facial prostheses and dental implants