

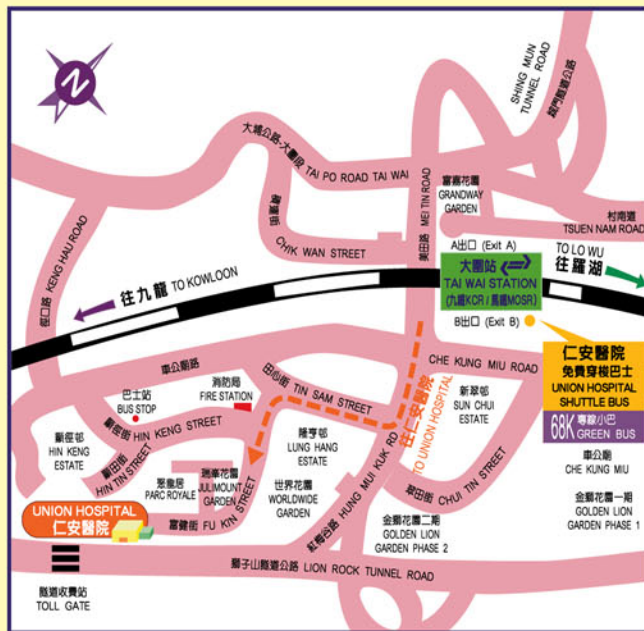


Union Heart Centre has been in service since April 2007. With the Hospital's mission of State-of-the-Art Technology, Patient-Centric Care, Premium Facilities and International Accreditation, Union Heart Centre is committed to providing the highest quality cardiac services to our clients. The new cardiovascular and intervention laboratory, equipped with the most advanced integrated X ray and intravascular ultrasound imaging system and life-support medical system, is set up with an operating theatre standard to ensure that all procedures can be performed in a strictly aseptic environment.

Staffed by a dedicated team of experienced medical and nursing staff, Union Heart Centre offers one-stop high quality comprehensive cardiac services, ranging from cardiac consultation, non-invasive diagnostic examinations, interventional procedures, open-heart surgery, 24 hour emergency cardiac care, intensive cardiac and coronary care to cardiac rehabilitation program.

Our services can be reached via:

- Union Hospital Cardiac Clinic
- Union Hospital Polyclinics
- Union Health Maintenance Centre
- Union 24 hour Out-patient Department
- Private General Practitioners or Specialists
- Referral from Hospital Authority



## 仁安心臟中心 Union Heart Centre

香港沙田大圍富健街18號仁安醫院大樓一樓  
1/F, Main Building, Union Hospital,  
18 Fu Kin Street, Tai Wai, Shatin, Hong Kong

電話 Tel : 2608 3133 / 2608 3388 傳真 Fax : 2602 0566  
電子郵件 E-mail : union@union.org  
網頁 Website : www.union.org

請登入以上網址申請成為「仁安醫院@新消息速遞」會員，  
你便可收到本院最新健康活動資訊。

To receive information on health promotional activities, please register  
as member of Union@News Express at our Hospital's website.

本院保留一切更改或刪改此單張之權利，而不作另行通知。  
Our Hospital reserves the RIGHT to amend any information in this leaflet  
without prior notification.

### 交通設施 Traffic Facilities

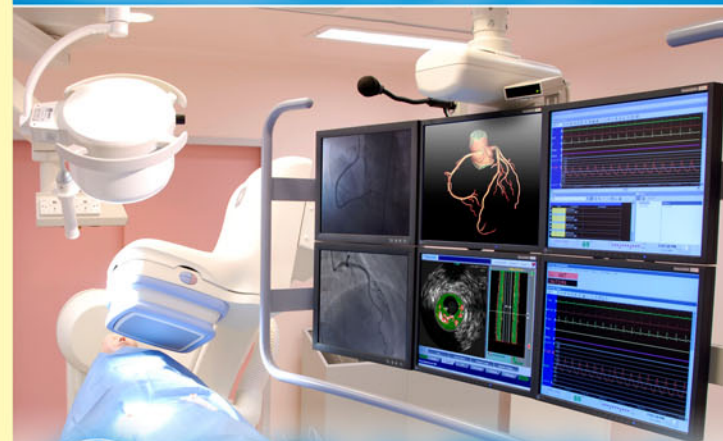
本院設有免費穿梭巴士，行走本院及大圍。  
Free Union Hospital Shuttle Buses run between the Hospital and Tai Wai.

專線小巴 Green Bus : 68K (由沙田及大圍火車站開出)  
(From Shatin and Tai Wai KCR Stations)

公共巴士 Buses : 46P, 46X, 80, 80P, 81M, 85B, 86B, 87B, 88M, 89B  
(由九龍開出 From Kowloon)

MAR/HEC-0708

PEACE OF MIND 讓您倍感安心  
PREMIUM HEALTHCARE 優質護理 愛的關懷



# 仁安心臟中心 Union Heart Centre

看透您的心 安心由此起

Let Us Take Good Care of Your Heart at Union



Enquiry & Appointment  
查詢及預約  
2608 3133



仁安醫院  
Union Hospital

頂尖科技 · 貼心護理 · 尊貴設施

State-of-the-Art Technology · Patient-Centric Care · Premium Facilities

## 中心簡介 Introduction



仁安心臟中心於二零零七年四月投入服務，配合仁安醫院以頂尖科技、貼心護理、尊貴設施及國際認證之理念，心臟中心將提供優質之心臟健康檢查及治療服務。心臟導管及介入治療室除備有最先進之心臟導管X光顯影及血管腔內超聲顯像虛擬組織系統外，更具備標準手術室規格，務求令所有手術在高標準的無菌環境下進行，減低感染機會。

心臟中心服務全面化，範圍包括心臟健康檢查、診治、導管介入治療、心臟外科手術、24小時心臟緊急服務及心臟康復跟進計劃等。心臟中心亦與深切治療部及手術室緊密聯繫，配合具豐富經驗之醫療團隊，為顧客提供快捷及妥善之照顧。

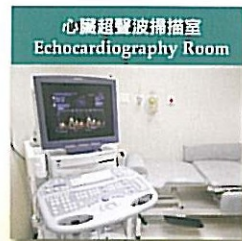
市民可透過下列途徑經轉介使用本中心各項服務：

- 本院心臟專科診所
- 本院各分科診所
- 本院保健中心
- 本院24小時門診及專科門診
- 私家普通科或專科醫生
- 醫管局轄下各醫院醫生



# 服務範圍 Service Area

非創傷性檢查	Non-Invasive Investigations
1. 心臟專科門診 / 心臟健康檢查服務	Cardiac Consultation / Cardiac Health Assessment
2. 靜態心電圖	Resting Electrocardiogram
3. 24小時活動心電圖	Holter Electrocardiogram
4. 平板運動心電圖	Treadmill Exercise Stress Test
5. 24小時活動血壓量度	Ambulatory Blood Pressure Monitoring
6. 心跳異常紀錄	Cardiac Event Recorder
7. 斜床測試	Tilt Table Test
8. 心臟超聲波	Echocardiography
9. 經食道心臟超聲波	Transoesophageal Echocardiography
10. 心臟磁力共振掃描	Cardiac Magnetic Resonance Imaging
11. 心臟電腦掃描	Cardiac Computed Tomography



導管式介入治療	Interventional Cardiovascular Therapeutics
1. 冠狀動脈成形及支架放置術	Percutaneous Transluminal Coronary Angioplasty and Stenting
2. 冠狀動脈斑塊旋磨切除術	Rotational Atherectomy
3. 頸動脈成形及支架放置術	Carotid Artery Angioplasty and Stenting
4. 週邊血管成形及支架放置術	Percutaneous Transluminal Angioplasty and Stenting of Peripheral Arteries
5. 腎動脈成形及支架放置術	Renal Artery Angioplasty and Stenting
6. 主動脈血管瘤支架放置術	Endovascular Treatment of Aortic Aneurysms
7. 心臟瓣膜氣囊成形術	Balloon Valvuloplasty
8. 導管氣囊二尖瓣擴張術	Percutaneous Transluminal Mitral Commissurotomy
9. 心臟射頻電流導管消融術	Radiofrequency Ablation
10. 心臟起搏器安裝術	Implantation of Cardiac Pacemaker
11. 植入性心臟除顫器安裝術	Implantation of Implantable Cardioverter Defibrillator
12. 先天性心臟病經導管介入治療術	Interventional Therapy of Congenital Heart Disease
13. 腦血管經導管介入治療術	Intracranial Interventional Neurovascular Therapy
14. 婦科經導管介入治療術	Gynecological Interventional Procedures

導管式介入診斷檢驗	Transcatheter Diagnostic Examination
1. 冠狀動脈造影	Coronary Angiogram
2. 左心室功能造影	Left Ventriculogram
3. 左右心臟功能檢驗	Right and Left Heart Study
4. 主動脈造影	Aortogram
5. 頸動脈造影	Carotid Angiogram
6. 腦動脈造影	Cerebral Angiogram
7. 週邊血管造影	Peripheral Angiogram
8. 腎動脈造影	Renal Arteriography
9. 靜脈造影	Venogram
10. 心臟電生理檢查	Electrophysiology Study

